

FAST FACTS

Q TOWER

Address: 200 Queens Quay West

Developers: Lifetime Developments and DiamondCorp

Architect: Wallman Architects

Interior Design: U31

BUILDING FEATURES

60-storeys

915 suites

Port Cochère covered arrival.

SUITES

9 and 10 ft smooth ceilings throughout.

Outdoor space of either terrace or balcony on most suites, as per plan.

Stunning picturesque views in every direction.

BUILDING AMENITIES

Iconic world class artwork throughout by Michael Moebius.

Integrated Smart Living and hi-speed internet available throughout.

Over 27,000sf of world class amenities across 3 floors:

GROUND LEVEL

Double height lobby with concierge, mail room and parcel room.

2ND LEVEL

Indoor amenity space featuring indoor/outdoor fitness featuring cardio equipment by Freemotion Fitness, free weights area, exercise multi-purpose room and massage room. A Wi-Fi co-working space with meeting rooms, James Bond inspired games room, luxurious theatre room, and outdoor lounge with ping pong and foosball.

3RD LEVEL

Resident's lounge with private dining with catering kitchen and social lounge. Access to outdoor dining terrace and lounge with BBQ and Pizza Oven.

6TH LEVEL

View lounge, kid's zone with outdoor playground, outdoor dining terrace with BBQ and Pizza Oven. Full size rooftop pickleball court.

FEATURES AND FINISHES

ELEVATED SUITES

- 9' to 10' ceiling heights
- Floor-to-ceiling windows provide downtown views
- Choice of designer-selected flooring throughout the suite and all bedrooms
- Smooth finished ceilings
- Solid entry doors with security view-hole
- Insulated double-glazed windows
- Outdoor living with every suite

NOUVEAU KITCHENS

- Refined and modern kitchen cabinetry, custom-designed by U31
- Sleek chrome finish plumbing fixtures, with with the option to upgrade
- Choice of stone countertops and contemporary tile backsplash, with the option to upgrade
- State-of-the-art integrated refrigerator and dishwasher
- Stainless steel sink, microwave, oven hood fan and range
- Kitchen island upgrade option available

SIMPLE AND SLEEK BATHROOMS

- Modern bathroom cabinetry, designed by U31
- Designer-selected countertop and sink
- Wall-mounted vanity mirror
- Designer-selected tub and plumbing fixtures, with the option to upgrade
- Glass shower stall and designer-selected fixtures
- Tile flooring in all bathrooms

CONVENIENT LAUNDRY

- In-suite laundry closet with stacked washer and dryer
- Tile flooring in laundry closet

TECH FEATURES

- 1Valet smart home features for all suites
- Individual thermostat for suite temperature control
- Emergency voice communications system, smoke and carbon monoxide detector

- Pre-wiring for cable TV, high-speed Internet access and telephones, as per plan
- Card and key access throughout all common areas
- Enterphone in lobby entrance vestibule
- Remote control/access card for private garage entry
- FOB access throughout common areas

BUILDING FEATURES

- Poised and bold 60 storey tower designed by Wallman Architects
- Elegant and welcoming lobby with co-working lounge, property management office, mail room and parcel area
- Hotel inspired port cochère
- Convenient locker access
- Secure bicycle storage rooms
- Electric vehicle charging stations available
- WIFI enabled co-working spaces, private meeting rooms, workstations for the urban professional.
- Q Fit is equipped with Freemotion Fitness state of the art cardio equipment powered by iFit, free weights, weight training area with a fitness studio for yoga, meditation and stretching
- Get outside with our outdoor fitness area and social lounge fitted with outdoor fitness equipment, ping pong table and some friendly foosball.
- Kids Zone designed to be a serene space for children of every age to play, be creative and have some outdoor fun!
- Q Lounge featuring private dining area, catering kitchen, wet bar station with both hard and soft seating. Enjoy with friends and family outdoors as well, as the lounge connects to outdoor dining and lounge with BBQ stations and pizza ovens. For the enjoyment of any occasion.
- James Bond inspired Games Room, enjoy the plentiful card and billiards tables and a full catering wet bar.
- Theatre Room with large television screens to enjoy movies, TV shows, sporting events or even some gaming at leisure.
- Outdoor pickleball court with views of the city, the CN Tower while getting a fun workout in.



TOWER



DiamondCorp

AUSTIN BIRCH

Q Tower Preview



Diamond Corp

AUSTIN BIRCH

An aerial, black and white photograph of the Toronto skyline. The CN Tower is prominent on the left. A tall, cylindrical skyscraper is overlaid in the center, glowing with a vibrant red light. The city extends to the waterfront, with various buildings and the harbor visible. The sky is overcast.

**THE MOST EXCITING NEW PROJECT
COMING TO DOWNTOWN TORONTO.
FOREVER BECOMING A PART OF THE MOST
PHOTOGRAPHED IMAGE OF A NATION!**

HISTORY & VISION

Two of Canada's leading and award-winning real estate development firms, joining forces to proudly redefine Toronto's waterfront skyline!



BISHA, TORONTO



THE YORKVILLE, TORONTO



FOUR SEASONS, TORONTO



CELESTE, TORONTO



THE WELL, TORONTO



BRIGHTWATER, MISSISSAUGA





PERFECTLY LOCATED **50 YEARS AGO**

The federal government identified this site, 50 years ago, as the most central location amidst Toronto's future landmarks with immediate access to the waterfront.

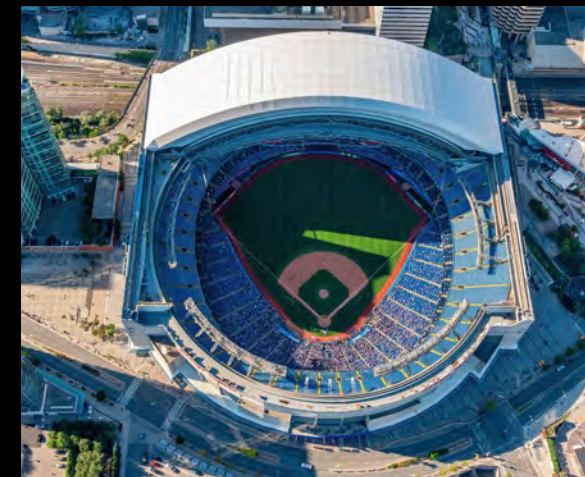


PERFECTLY **LOCATED TODAY**

The last piece of real estate that can be developed
in the heart of Toronto's landmark locations.



AT THE HEART OF **THE CITY**



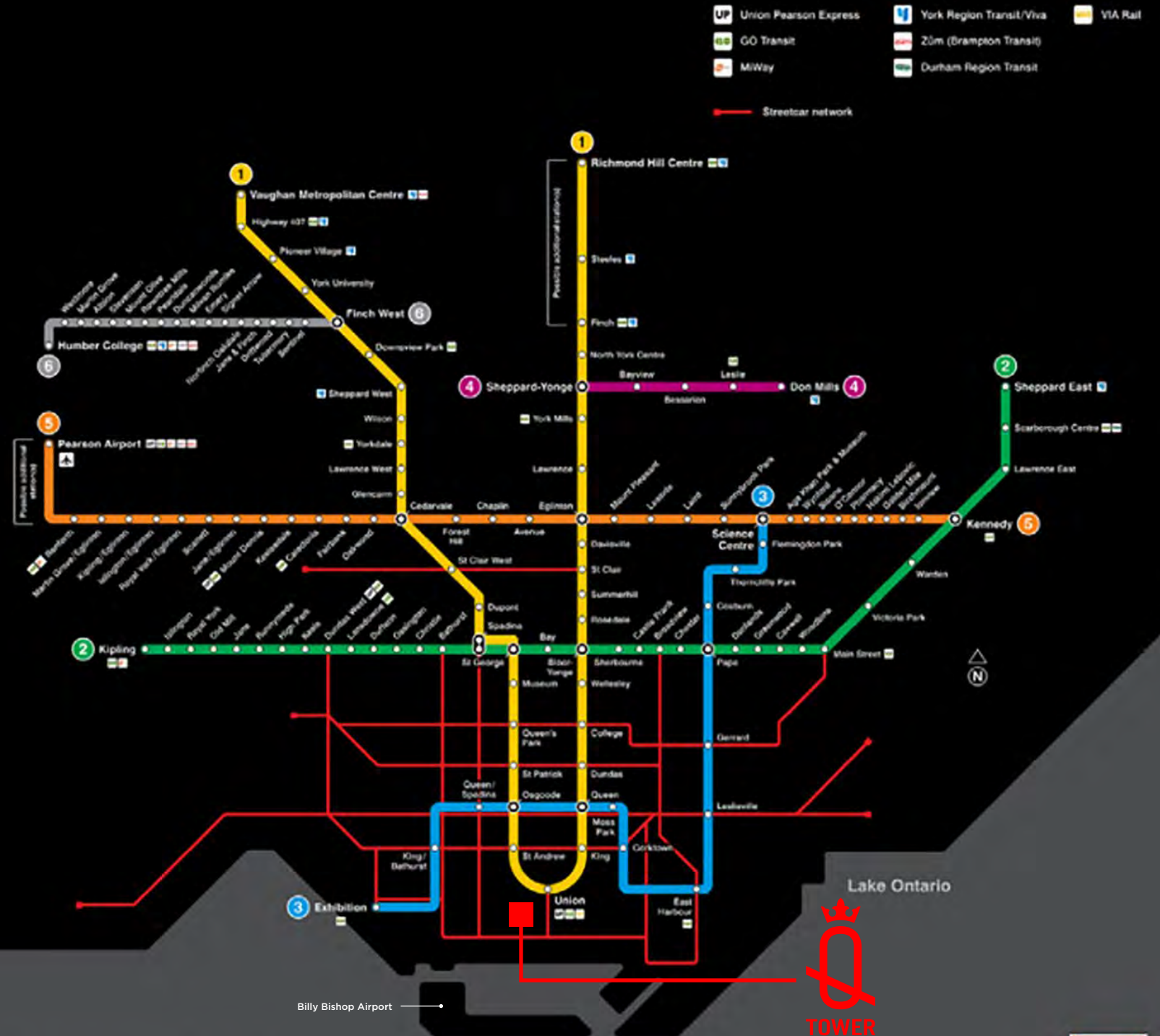
AT THE HEART OF **THE CITY**

5 MINUTE WALK
TO EVERYTHING

100
TRANSIT SCORE

99
WALK SCORE

87
BIKE SCORE



©2021 Toronto Transit Commission 01/21 - Map not to scale
Names for future stations are indicative only
Station locations and line extensions subject to change



PROJECT TEAM

Multi-award-winning architects and designers to execute the vision;

WALLMAN ARCHITECTS



10 YORK



M2M



LIBERTY MARKET TOWER



LAKESIDE RETREAT



VITA ON THE LAKE



SCALA



A ROYAL COLLABORATION

Iconic, inspiring, and distinctive.

Q TOWER x MICHAEL MOEBIUS

In homage to this majestic expression in modern elegance, Lifetime Developments and DiamondCorp are thrilled to announce our esteemed collaboration with one of the most recognized contemporary artists in the world – Michael Moebius. Known for his hyper-realistic illustrative portraits of celebrities blowing bubblegum, we are privileged to showcase his most iconic works throughout the spaces at Q Tower.



ARTIST
**MICHAEL
MOEBIUS**

Michael Moebius' iconic artwork of celebrity figures



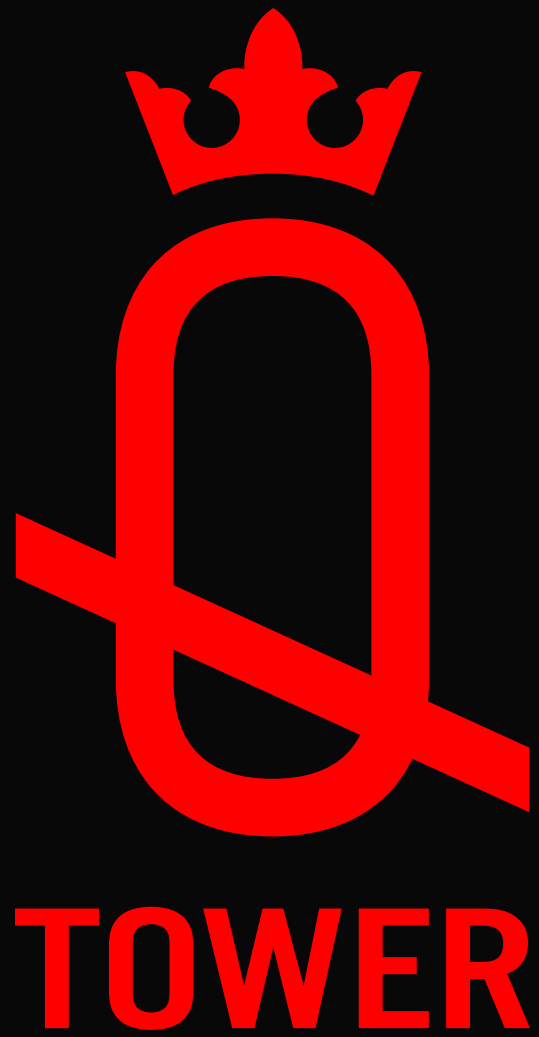
Queen Elizabeth II



David Bowie



Kate Moss

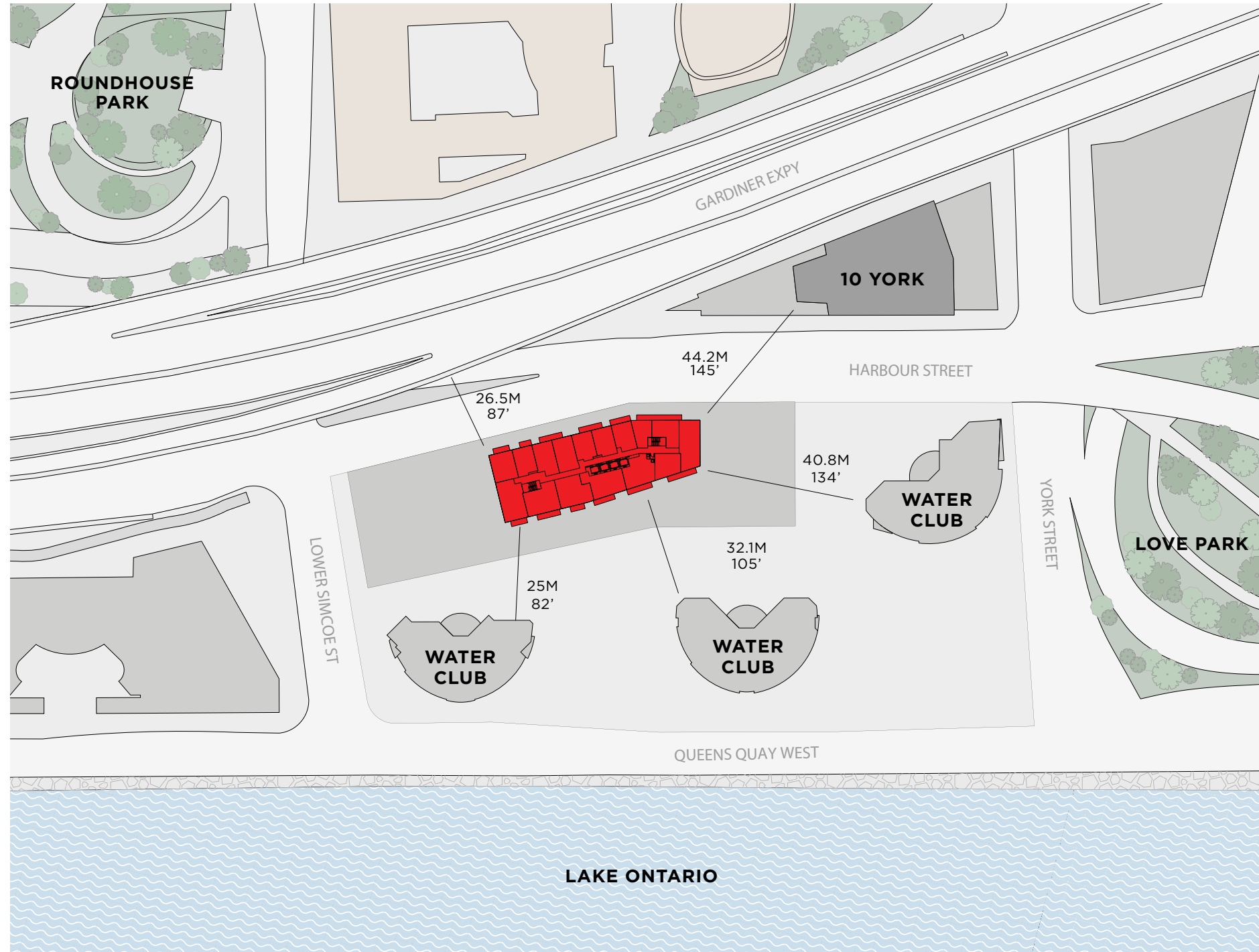


BUILDING HIGHLIGHTS

- **60 STOREYS**
- **902 SUITES ALL WITH OUTDOOR SPACE**
- **OVER 27,000 SQ FT OF WORLD CLASS AMENITIES ACROSS 3 FLOORS**
- **24-HOUR CONCIERGE**
- **PORT COCHÈRE COVERED ARRIVAL**
- **9 FT CEILINGS**
- **ICONIC WORLD CLASS ARTWORK THROUGHOUT**
- **OCCUPANCY SCHEDULED FOR 2030!**



ROGERS
CENTRE
CN TOWER
RIPLEYS
AQUARIUM



THE TOWER FLOORS **7-60**

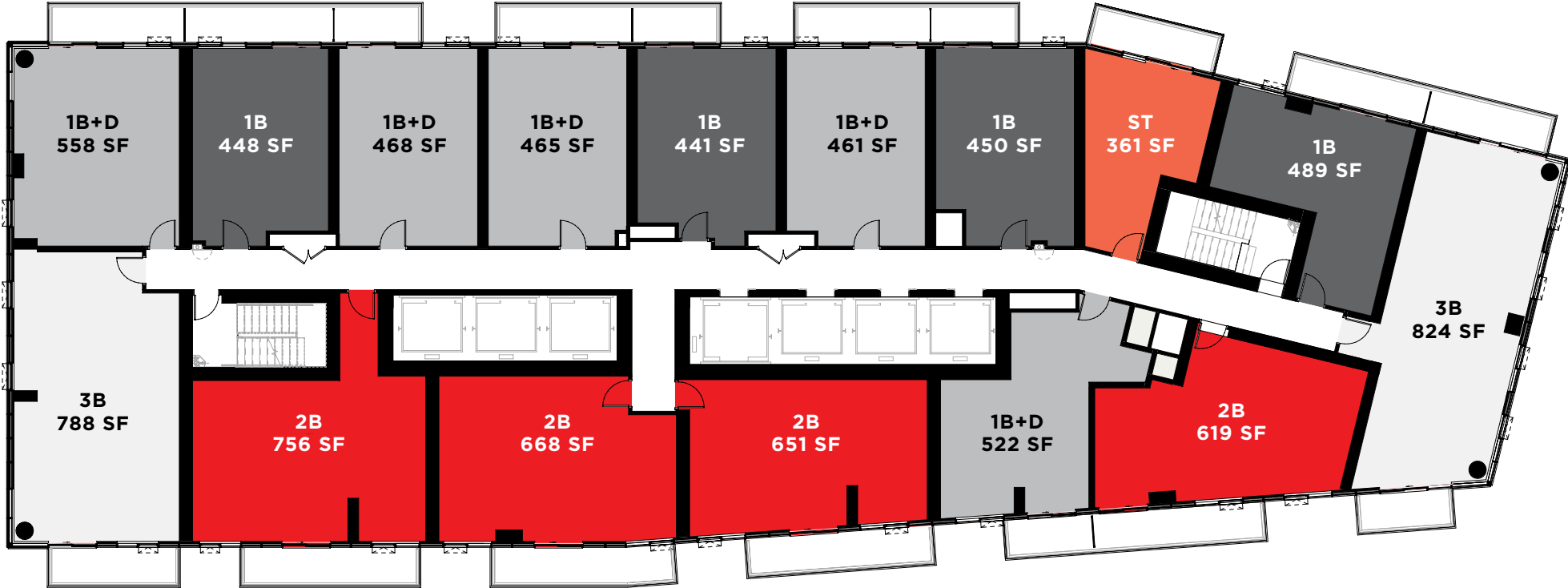
- Perfectly positioned to provide distance and views from all suites.
- Perfectly positioned to provide water views from all south-facing suites.

PROTECTED VIEWS

OF THE WATER,
CN TOWER AND
TORONTO'S
FAMOUS SKYLINE.



TYPICAL TOWER **KEYPLATE**



The most efficient and desirable floorplate that checks all the boxes

- ☑ 7 Elevators
- ☑ Shallow and wide suites maximizing windows and views
- ☑ Every suite has an outdoor balcony
- ☑ Every bedroom in every suite on window with natural light

	STUDIO 361 SQ.FT		1 BED 441 - 489 SQ.FT		1 BED + DEN 461 - 558 SQ.FT		2 BED 619 - 756 SQ.FT		3 BED 788 - 824 SQ.FT
--	----------------------------	--	---------------------------------	--	---------------------------------------	--	---------------------------------	--	---------------------------------

NORTH WEST VIEW 40TH FLOOR

Actual photograph



SOUTH VIEW 35TH FLOOR

Actual photograph





KEY DATES

AUG 31

THE VIEWS AT Q ROOFTOP

SEPT 5 TO OCT 6

BROKERAGE & TEAM PRESENTATIONS

OCT 12

OFFICIAL PROJECT LAUNCH!

OCT 14 TO 15

CLIENT OPEN HOUSE (NORTH VENUE)

OCT 16 TO 18

CLIENT OPEN HOUSE (CENTRAL VENUE)

SALES SIGNING BEGINS!





TOWER



DiamondCorp

AUSTIN BIRCH