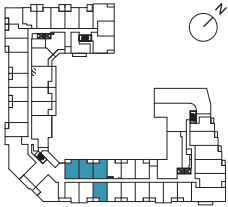


1F

1 Bedroom
Total: 542-553 sq.ft.
Interior: 503 sq.ft.
Exterior: 39-50 sq.ft.

THE SAW WHET



LEVEL 1



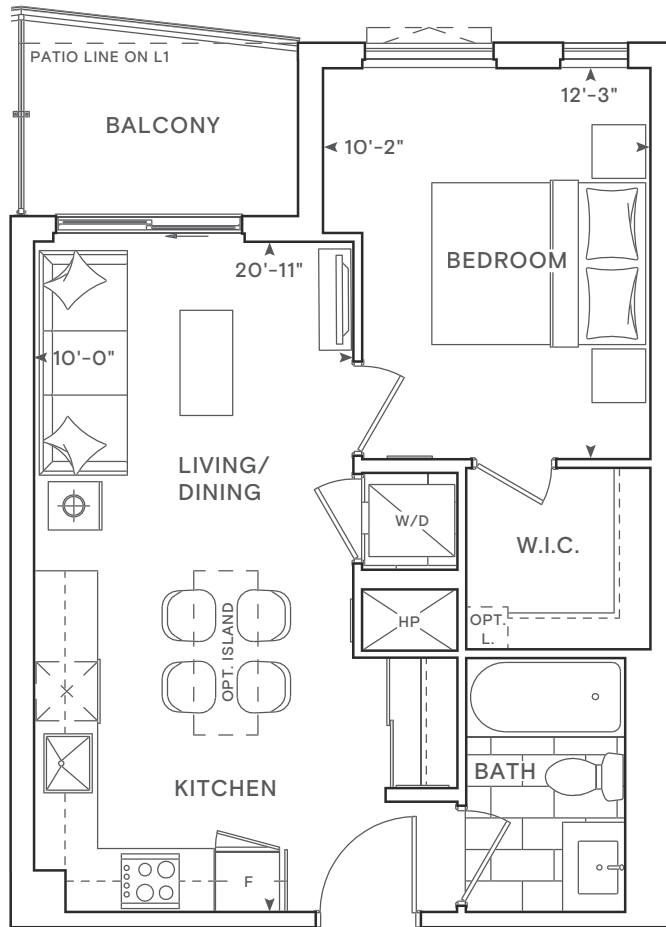
LEVEL 2-3



LEVEL 4



LEVEL 5-6



Building and view not to scale. All dimensions are approximate and subject to normal construction variances. Dimensions may exceed the usable floor area. Sizes and specifications subject to change without notice. Actual usable floor space may vary from the stated floor area. Furniture is displayed for illustration purposes only and does not necessarily reflect the electrical plan for the suite. Suites are sold unfurnished. Balcony and façade variations may apply, contact a sales representative for further details. E. & O. E. March 2022.

1H

1 Bedroom
Total: 542-553 sq.ft.
Interior: 503 sq.ft.
Exterior: 39-50 sq.ft.

THE SAW WHET



LEVEL 1



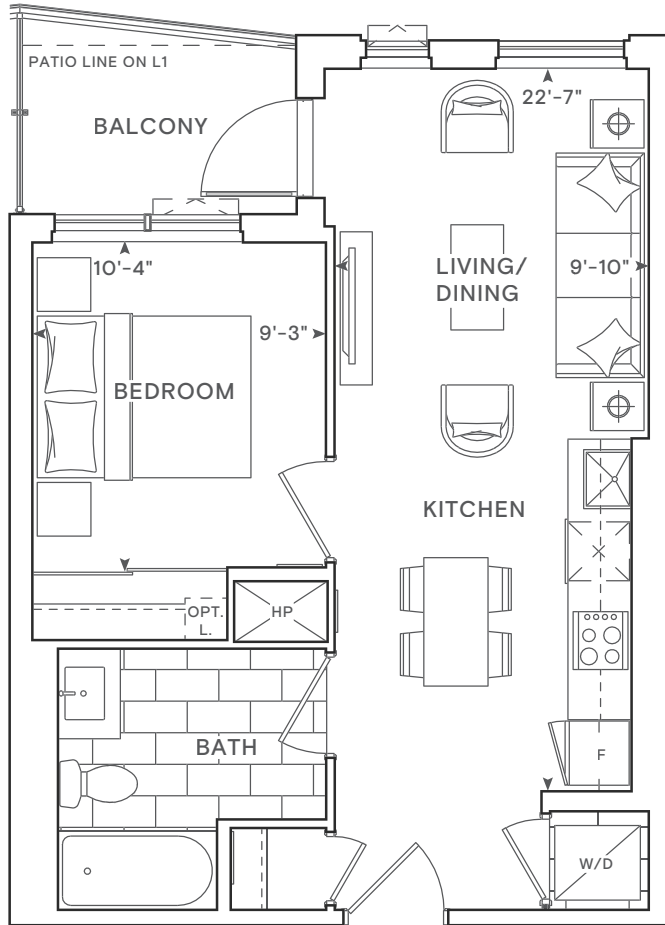
LEVEL 2-3



LEVEL 4



LEVEL 5-6

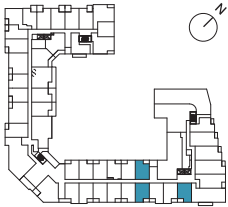


Building and view not to scale. All dimensions are approximate and subject to normal construction variances. Dimensions may exceed the usable floor area. Sizes and specifications subject to change without notice. Actual usable floor space may vary from the stated floor area. Furniture is displayed for illustration purposes only and does not necessarily reflect the electrical plan for the suite. Suites are sold unfurnished. Balcony and façade variations may apply, contact a sales representative for further details. E. & O. E. March 2022.

1H

1 Bedroom
Total: 542-553 sq.ft.
Interior: 503 sq.ft.
Exterior: 39-50 sq.ft.

THE SAW WHET



LEVEL 1



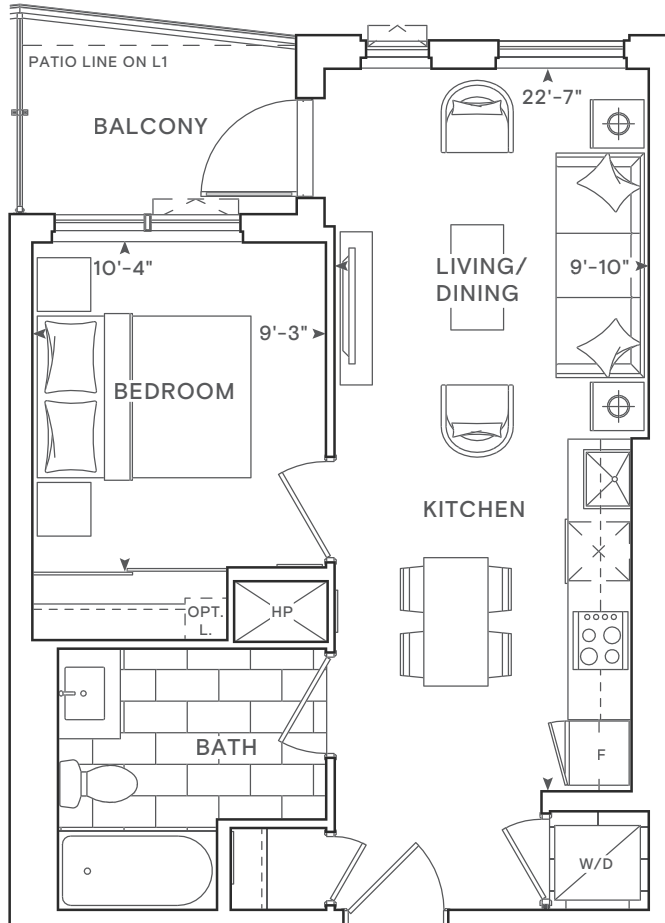
LEVEL 2-3



LEVEL 4



LEVEL 5-6

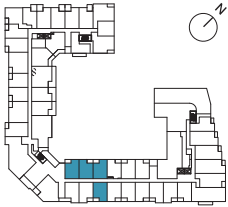


Building and view not to scale. All dimensions are approximate and subject to normal construction variances. Dimensions may exceed the usable floor area. Sizes and specifications subject to change without notice. Actual usable floor space may vary from the stated floor area. Furniture is displayed for illustration purposes only and does not necessarily reflect the electrical plan for the suite. Suites are sold unfurnished. Balcony and façade variations may apply, contact a sales representative for further details. E. & O. E. March 2022.

1F

1 Bedroom
Total: 542-553 sq.ft.
Interior: 503 sq.ft.
Exterior: 39-50 sq.ft.

THE SAW WHET



LEVEL 1



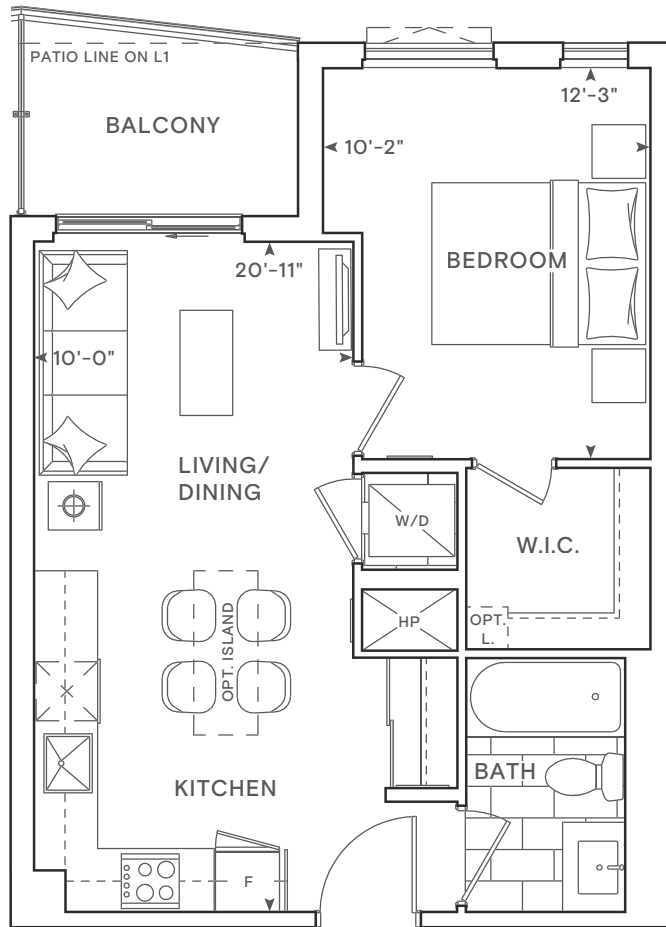
LEVEL 2-3



LEVEL 4



LEVEL 5-6

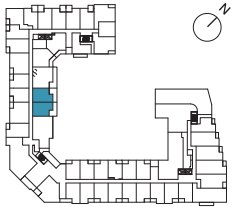


Building and view not to scale. All dimensions are approximate and subject to normal construction variances. Dimensions may exceed the usable floor area. Sizes and specifications subject to change without notice. Actual usable floor space may vary from the stated floor area. Furniture is displayed for illustration purposes only and does not necessarily reflect the electrical plan for the suite. Suites are sold unfurnished. Balcony and façade variations may apply, contact a sales representative for further details. E. & O. E. March 2022.

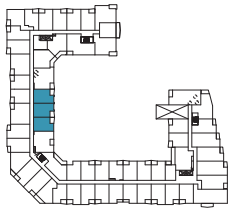
1C+D

1 Bedroom + Flex
 Total: 579-678 sq.ft.
 Interior: 529 sq.ft.
 Exterior: 50-149 sq.ft.

THE SAW WHET



LEVEL 1



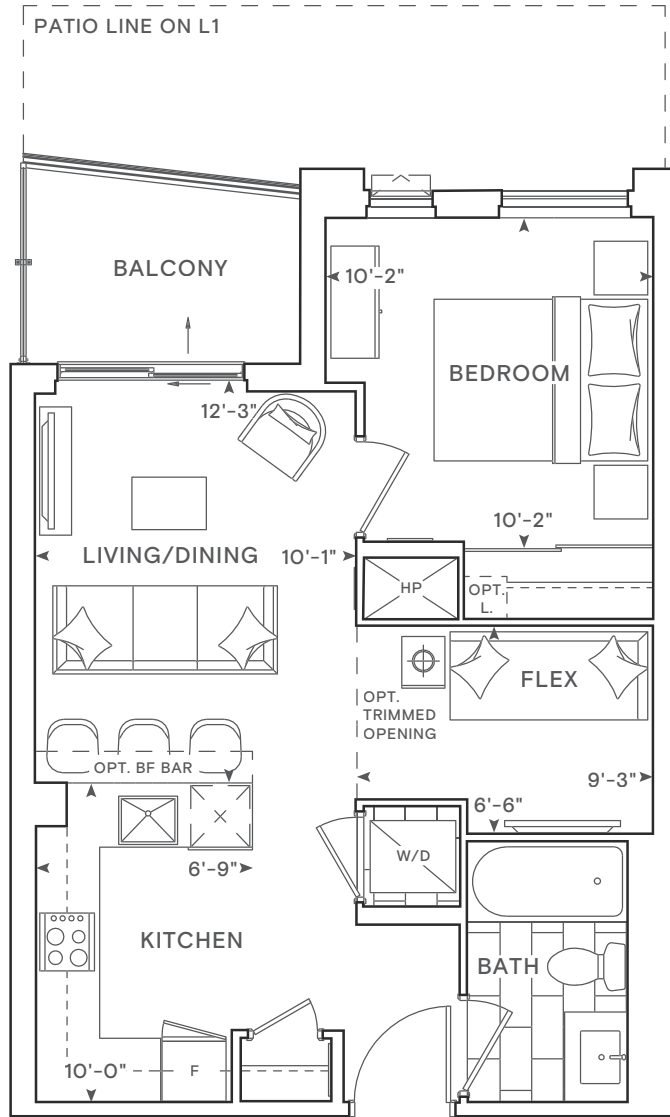
LEVEL 2-3



LEVEL 4



LEVEL 5-6



Building and view not to scale. All dimensions are approximate and subject to normal construction variances. Dimensions may exceed the usable floor area. Sizes and specifications subject to change without notice. Actual usable floor space may vary from the stated floor area. Furniture is displayed for illustration purposes only and does not necessarily reflect the electrical plan for the suite. Suites are sold unfurnished. Balcony and façade variations may apply, contact a sales representative for further details. E. & O. E. March 2022.

THE
S A W
W H E T

Suite Price List

ONLY 5 SUITES REMAIN

SUITE	TYPE	MODEL	UNIT SIZE (SQ.FT.)	EXPOSURE	PRICE
<u>253</u>	1 BED	<u>1E</u>	503	NORTH	\$614,900
<u>312</u>	1 BED	<u>1H-BF</u>	503	NORTH	\$626,900
<u>512</u>	1 BED	<u>1H-BF</u>	503	SOUTH	\$639,900
<u>619</u>	1 BED	<u>1E</u>	503	SOUTH	\$666,900
<u>347</u>	1 BED + DEN	<u>1C+D</u>	529	EAST	\$689,900

Platinum Exclusive Suite Incentives

Purchase With Only 5% Down This Year

\$0 Development Charges

No Interim Occupancy Period – Occupy When Building Is Registered

Tentative Occupancy February 2025

Capped Development Charges*:

STUDIO/1BR/1BR+D/1BR+F: ~~\$7,500~~ **\$0**

2BR/2BR+D/3B: ~~\$11,000~~ **\$0**

Right to Lease During Occupancy*

Free Assignment*

Reduced Deposit Structure:

Only 10% down

\$10,000 on signing†

Balance to 2.5% in 30 days

2.5% in 120 days

5% on Jan 6, 2025

Parking & Locker: Wait Listed

Closing Date: Feb 2025

Maintenance: \$0.59/sq.ft. (All utilities separately metered)

Smart Home & Ultra High-Speed Internet: \$49.95 + HST

PRECON PLUS

DEVELOPED BY:

*Administration and Legal fees may apply. Please see Sales Representative for full details. All prices, figures and materials are preliminary and are subject to change without notice. All areas and stated room dimensions are approximate. Floor area measured in accordance with Tarion Bulletin #22. Actual living area will vary from floor area stated. E. & O. E. April 11, 2024.

CAIVAN